

GPR20 Antibody (C-term)
Affinity Purified Rabbit Polyclonal Antibody (Pab)
Catalog # AP17975b

Specification

GPR20 Antibody (C-term) - Product Information

Application	WB,E
Primary Accession	Q99678
Other Accession	NP_005284.2
Reactivity	Human
Host	Rabbit
Clonality	Polyclonal
Isotype	Rabbit IgG
Calculated MW	38650
Antigen Region	298-324

GPR20 Antibody (C-term) - Additional Information

Gene ID 2843

Other Names

G-protein coupled receptor 20, GPR20

Target/Specificity

This GPR20 antibody is generated from rabbits immunized with a KLH conjugated synthetic peptide between 298-324 amino acids from the C-terminal region of human GPR20.

Dilution

WB~~1:1000

E~~Use at an assay dependent concentration.

Format

Purified polyclonal antibody supplied in PBS with 0.09% (W/V) sodium azide. This antibody is purified through a protein A column, followed by peptide affinity purification.

Storage

Maintain refrigerated at 2-8°C for up to 2 weeks. For long term storage store at -20°C in small aliquots to prevent freeze-thaw cycles.

Precautions

GPR20 Antibody (C-term) is for research use only and not for use in diagnostic or therapeutic procedures.

GPR20 Antibody (C-term) - Protein Information

Name GPR20

Function Orphan receptor with constitutive G(i) signaling activity that activate cyclic AMP.

Cellular Location

Cell membrane; Multi-pass membrane protein

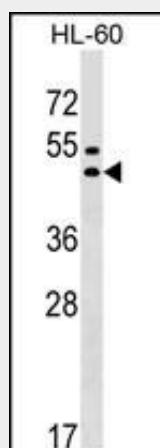
Tissue Location

Ubiquitous with highest levels in intestinal tissues. In the brain detected in thalamus, putamen, and caudate, but not in frontal cortex, pons and hypothalamus

GPR20 Antibody (C-term) - Protocols

Provided below are standard protocols that you may find useful for product applications.

- [Western Blot](#)
- [Blocking Peptides](#)
- [Dot Blot](#)
- [Immunohistochemistry](#)
- [Immunofluorescence](#)
- [Immunoprecipitation](#)
- [Flow Cytometry](#)
- [Cell Culture](#)

GPR20 Antibody (C-term) - Images

GPR20 Antibody (C-term) (Cat. #AP17975b) western blot analysis in HL-60 cell line lysates (35ug/lane). This demonstrates the GPR20 antibody detected the GPR20 protein (arrow).

GPR20 Antibody (C-term) - Background

Orphan receptor with constitutive G(i) signaling activity that activate cyclic AMP.

GPR20 Antibody (C-term) - References

Hase, M., et al. J. Biol. Chem. 283(19):12747-12755(2008)
O'Dowd, B.F., et al. Gene 187(1):75-81(1997)